

# SEBASTIAN CHEMICAL MANAGEMENT CENTER A SAFETY ASSET FOR EVERY FILM AND PRINT PROCESSING DARKROOM

A SAFE AND CONVENIENT WAY TO DISPENSE CHEMISTRY TO STUDENTS WHILE RELIEVING THE LAB INSTRUCTOR OF UNNECESSARY CLASSROOM PRESSURE AND DELAY.

MODEL: SCDD-3T WITH THREE 7-1/2 GAL TANKS (42" WIDE)

MODEL: SCDD-4T WITH FOUR 7-1/2 GAL TANKS (54" WIDE)

THE SCDD-3T OR 4T UNITS PROVIDE AN EXCELLENT WAY FOR STUDENTS TO SAFELY OBTAIN AND MEASURE THE EXACT AMOUNT OF CHEMISTRY THEY NEED WITHOUT WASTE OR SPILL.

7-1/2 GALLON CROSS-LINKED, HIGH-DENSITY POLYETHYLENE, CYLINDRICAL, FLAT-BOTTOM, TRANSLUCENT CHEMICAL TANKS ARE SUPPLIED WITH FLOATING KIDS, COVERS AND SELF-CLOSING FAUCETS.

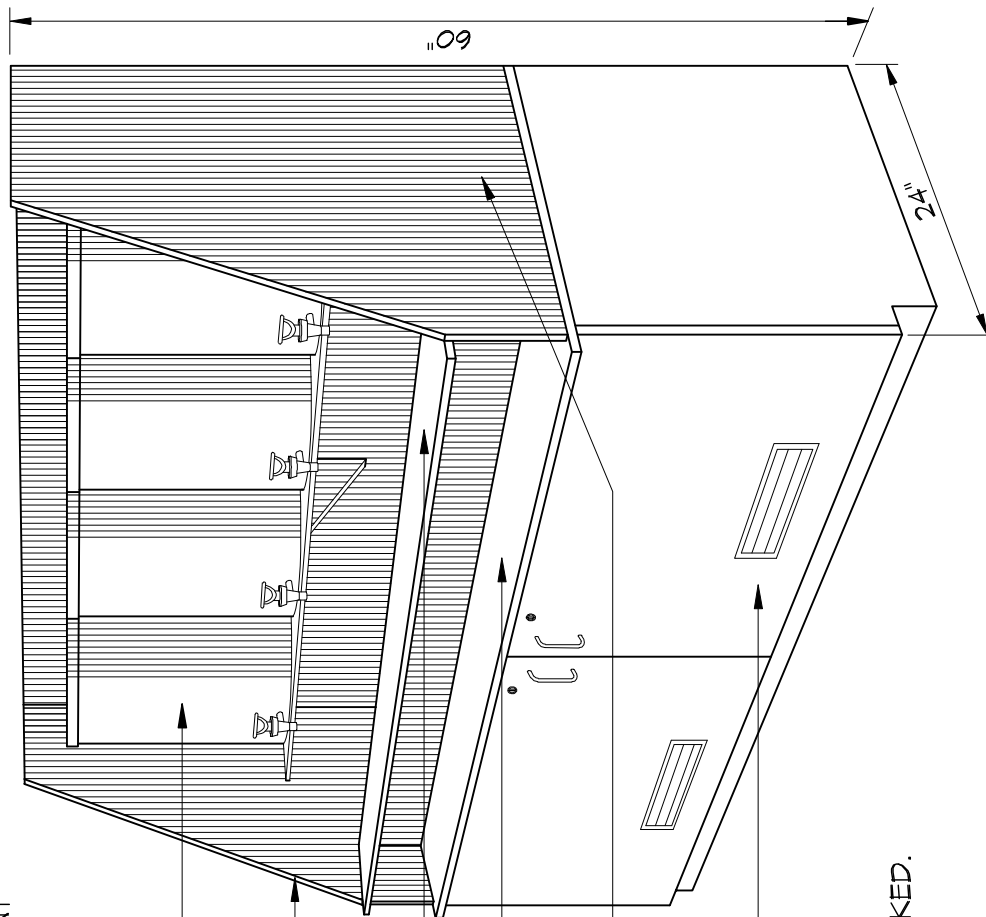
THE TANK CABINET IS MADE ENTIRELY OF PVC PLASTIC, IS INERT TO ALL PHOTO CHEMICALS AND IS VERY EASY TO CLEAN.

PVC UPPER DECK IS FOR DISPENSING CHEMISTRY AND IS AT ADA HEIGHT.

PVC LOWER DECK IS STORAGE SPACE FOR MEASURING CUPS.

THE AREA BELOW THE CHEMICAL TANKS IS A "DRY-SINK" WITH A VOLUME CAPACITY OF 30 GALLONS, TO HOLD THE CONTENTS OF ALL THE TANKS IN CASE OF A LEAK OR SPILL.

SEBASTIAN P-LAM CASE CABINETS (2) ARE "FREE-AIR" VENTILATED WITH PVC 3"Ø PVC PIPE EXHAUST AT THE UPPER REAR OF EACH CABINET. CABINETS ARE FITTED WITH PLASTIC LOUVERS, FINISHED IN WILSON ART "CHEM-SURF" LAMINATE AND LOCKED.



## SEBASTIAN DARKROOM PRODUCTS™ DIVISION OF CALIFORNIA STAINLESS MFG.

Unique, Innovative & Engineered to Work  
TOLL FREE (888) 712-7035 FAX (805) 484-1030  
calstainless@aol.com  
www.sebastiandarkroomprod.com