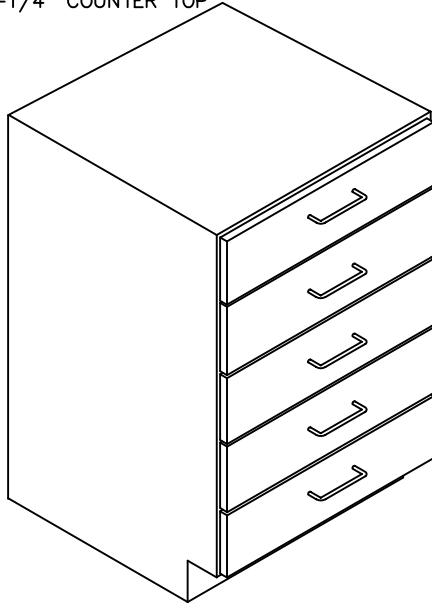


FIVE-DRAWER BASE CABINETS – "SD5"

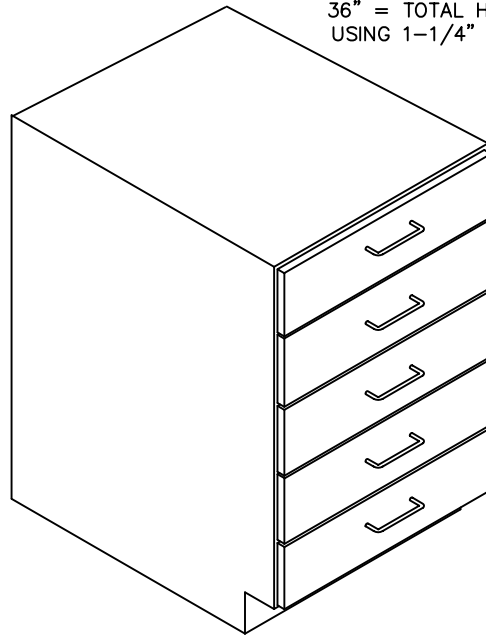
THE "SD5" IS A FIVE-DRAWER BASE CABINET 36" HIGH (INCLUDING A 1-1/4" THICK COUNTER TOP. TWO DEPTHS ARE AVAILABLE: 24" DEEP AND 29" DEEP. ORDER COUNTER TOPS SEPARATELY. STANDARD CABINET FINISH: WILSON ART "PLATINUM" #D315-60. OPTIONS: "SLKS" DRAWER LOCKS & "SSL" LIGHT-TIGHT DRAWER LIDS.

INSTALL UNDER A
25" DEEP COUNTER TOP
36" = TOTAL HEIGHT WHEN
USING 1-1/4" COUNTER TOP



"SD5" FIVE-DRAWER BASE
CABINET 24" DEEP

INSTALL UNDER A
30" DEEP COUNTER TOP
36" = TOTAL HEIGHT WHEN
USING 1-1/4" COUNTER TOP



"SD5" FIVE DRAWER BASE
CABINET 29" DEEP

DRAWER BASE CABINET MODEL	WIDTH	HEIGHT	DEPTH
SD5-153624	15"	36"	24"
SD5-183624	18"	36"	24"
SD5-213624	21"	36"	24"
SD5-243624	24"	36"	24"

DRAWER BASE CABINET MODEL	WIDTH	HEIGHT	DEPTH
SD5-273629	27"	36"	29"
SD5-303629	30"	36"	29"
SD5-333629	33"	36"	29"
SD5-363629	36"	36"	29"
SD5-393629	39"	36"	29"
SD5-423629	42"	36"	29"
SD5-453629	45"	36"	29"
SD5-483629	48"	36"	29"

NOTE: OVERALL HEIGHT OF THE CABINET IS 34-3/4" HIGH.



SEBASTIAN DARKROOM PRODUCTS™
DIVISION OF CALIFORNIA STAINLESS MFG.

Unique, Innovative & Engineered to Work
TOLL FREE (888) 712-7035 FAX (805) 484-1030
calstainless@aol.com
www.sebastiandarkroomprod.com